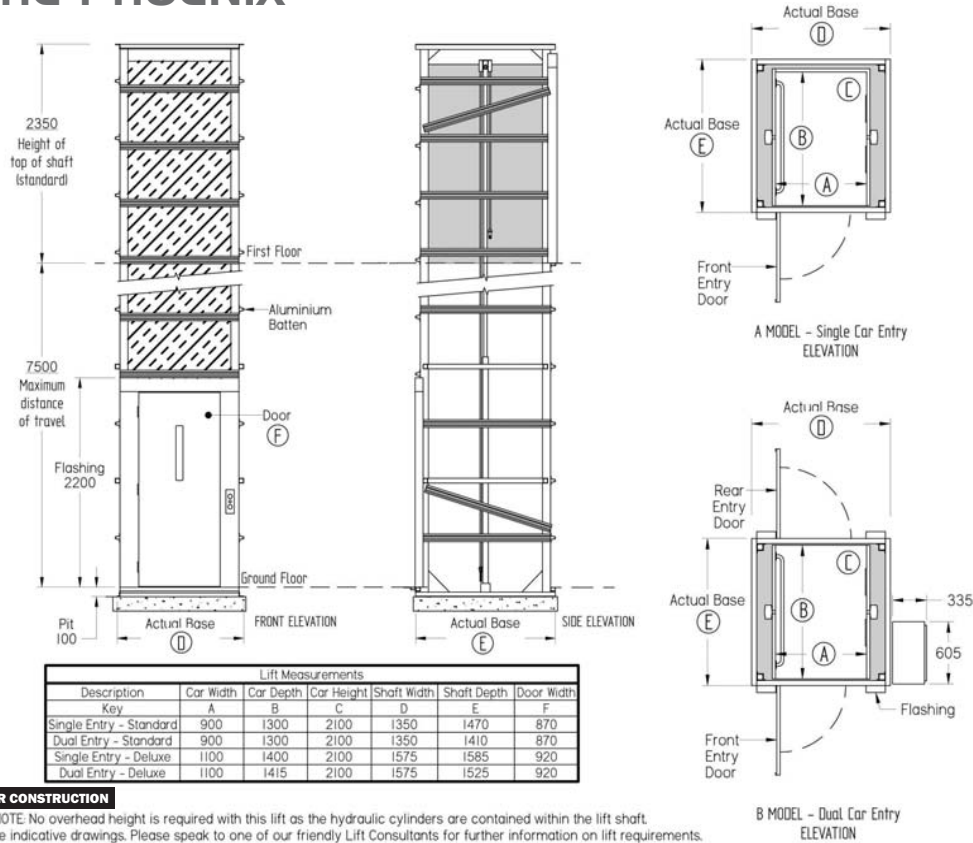


# THE PHOENIX



**NOT FOR CONSTRUCTION**

PLEASE NOTE: No overhead height is required with this lift as the hydraulic cylinders are contained within the lift shaft. These are indicative drawings. Please speak to one of our friendly Lift Consultants for further information on lift requirements.



RESIDENTIAL



DISABLED USE

# THE PHOENIX

## MAIN SPECIFICATIONS

- Carrying Capacity:** 350kg
- Car Size:** Standard - 900W x 1300D x 2100Hmm  
Deluxe - 1100W x 1400D x 2100Hmm
- Door Sizes:** Standard - 870mm x 2040Hmm  
Deluxe - 920 x 2040Hmm
- Maximum Travel:** Up to 7500mm overall
- Lift Speed:** Standard - Rated speed 0.185 m/sec with hydraulic valve stop with an up stop  
Enhanced - Rated speed 0.292m/sec using VF drive & increased pump (optional extra)
- Max No. of Stops:** 3 to 4 Stops
- Drive System:** Oil hydraulic chain over with indirect acting cylinders on each side of the lift car. 1:2 ratio
- Minimum Pit Depth:** 100mm
- Cylinder Extension:** Contained within lift tower
- Machine Cabinet:** 605W x 335D x 1800Hmm
- Controls:** Automatic operation & key isolation
- Standards:** Meets or exceeds requirements of the Australian Standards Lift code AS1735 Part 16 & 18
- Usage:** Residential
- Application:** External or internal
- Installation:** Crane in, dismantle or manoeuvred
- Lift Tower:** Inclusive, Self supporting - no structural walls required. Cladding by others can be attached directly to the lift structure
- Supply Voltage:** 240volt. Single Phase. 16amp RCD protected

☎ 0412 671 795

Lifts NQ Pty Ltd  
PO Box 234  
Townsville QLD 4810  
Tel 0412 671 795  
[enquiries@liftsnq.com.au](mailto:enquiries@liftsnq.com.au)  
[julius@liftsnq.com.au](mailto:julius@liftsnq.com.au)  
[www.liftsnq.com.au](http://www.liftsnq.com.au)  
A.B.N # 71 605 411 078  
QBCC: 1314109

LIFTS NQ Pty Ltd

Oil Hydraulic Chain Over Residential Lift



