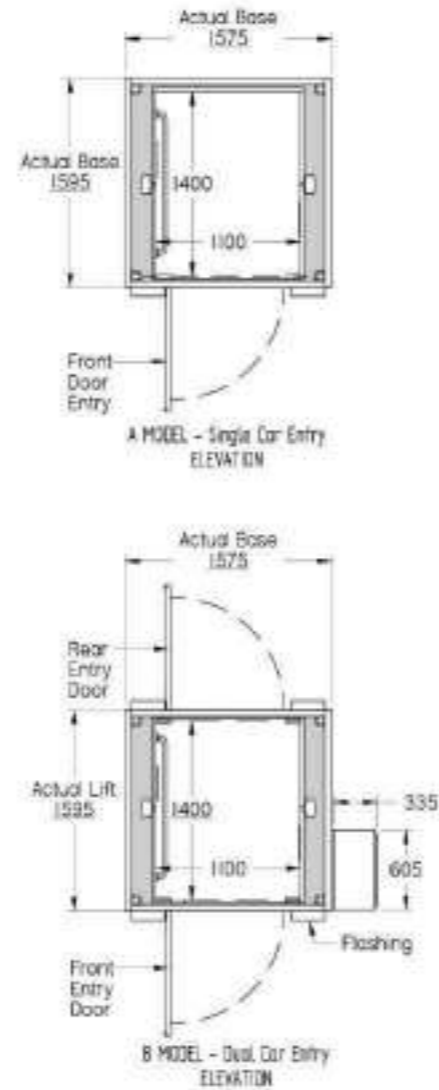
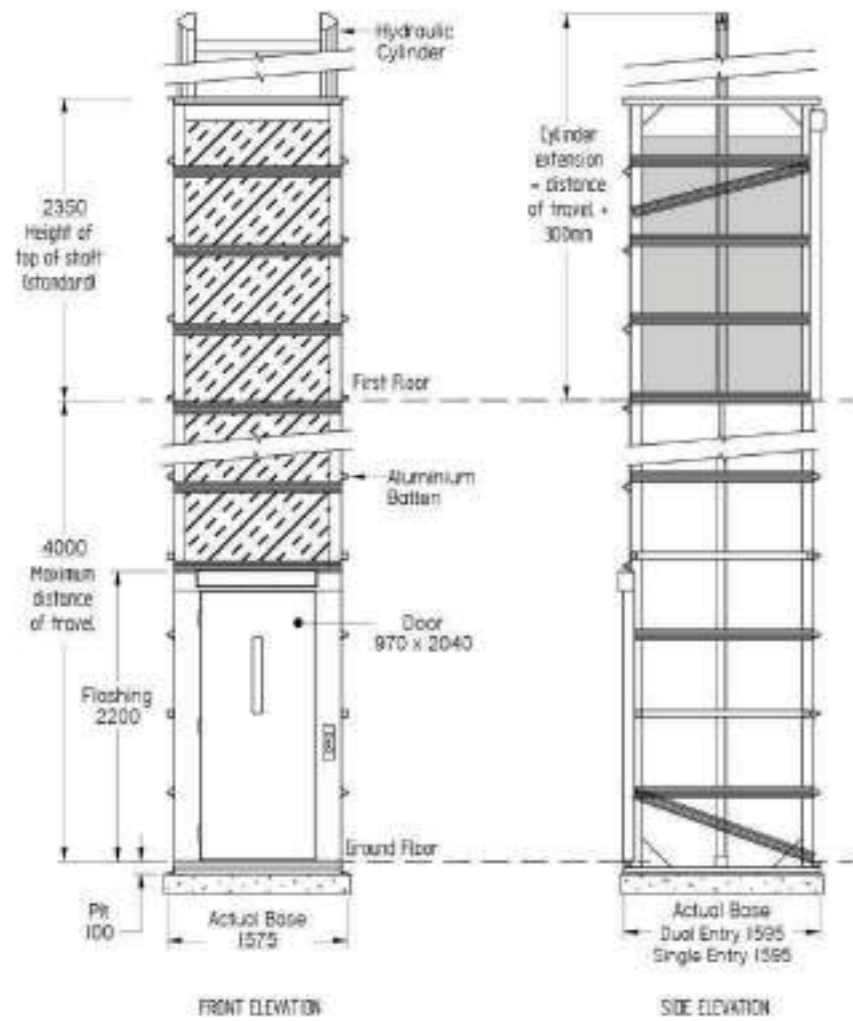


# THE PIONEER



COMMERCIAL



DISABLED USE

# THE PIONEER

NOT FOR CONSTRUCTION

Oil Hydraulic Commercial Lift

## MAIN SPECIFICATIONS

- Carrying Capacity:** 350kg
- Car Size:** Single Entry - 1100W x 1400D x 2100Hmm  
Dual Entry - 1100W x 1400D x 2100Hmm
- Door Size:** 970W x 2040Hmm
- Maximum Travel:** 4000mm
- Lift Speed:** Standard - Rated speed 0.145 m/sec with hydraulic valve stop with an up stop
- Max No. Of Stops:** 2 with the option of 1 intermediate landing
- Drive System:** Dual oil hydraulic cylinders on each side of the lift car
- Minimum Pit Depth:** 100mm
- Cylinder Extension:** Distance of travel plus 300mm
- Motor Cabinet:** 605W x 335D x 1800Hmm
- Controls:** Automatic operation & key isolation
- Standards:** Meets or exceeds requirements of the Australian Standards Lift code AS1735 Part 16 & BCA E3.6 compliant
- Usage:** Commercial
- Application:** External or internal
- Installation:** Crane in, dismantle or manoeuvred
- Lift Tower:** Inclusive. Self supporting - no structural walls required. Cladding by others can be attached directly to the lift structure
- Supply Voltage:** 240volt. 20amp RCD protected

☎ 0412 671 795

Lifts NQ Pty Ltd  
PO Box 234  
Townsville QLD 4810  
Tel 0412 671 795  
enquiries@liftsnq.com.au  
julius@liftsnq.com.au  
www.liftsnq.com.au  
A.B.N # 71 605 411 078  
QBCC: 1314109  
**LIFTS NQ Pty Ltd**





**"Ideal for providing limited mobility access to two storey commercial buildings, the Pioneer lift is Australia's most cost effective commercial lift overall"**

Built in Australia by a family operated company, the Pioneer offers a budget solution to providing disabled access to 2 level commercial buildings within a short amount of time.

Eliminating the costs associated with supplying load bearing walls, large slab footings & machine room construction, the Pioneer is supplied as a complete free standing unit with it's own self supporting shaft, landing doors, hydraulics & machine cabinet.

Compliant with Australian Standards 1735 part 16, the Pioneer lift is BCA E3.6 compliant & perfect for complying with the disabled access building regulation for commercial buildings whilst staying on budget.

Easy to install, the Pioneer can be installed within days & is suitable for either new or existing buildings. If selected, the lift can have cladding attached directly to it's framework.

Recently having had a face lift, the inside of the lift car is lined with crisp white laminate panels with vertical shadow lines to provide a sleek & modern appearance.

Reliable in performance & automatic in operation, the Pioneer has a lifting capacity of 350kg, to a maximum height of 4m, at a speed of 0.145m/sec.

**STANDARD SAFETY FEATURES**

Supplied with an impressive list of standard safety features, the Pioneer offers peace of mind with it's in-car automatic dialling emergency telephone, light ray sensors, emergency battery backup lowering system & lighting. On top of that, the Pioneer has a very easy to use manual lowering valve, should the lift car ever need to be lowered.



**Why buy Australian Made?**

- ▶ Built to Australian Standards
- ▶ Confidence in Quality
- ▶ Short lead times
- ▶ Parts readily available
- ▶ Jobs created in Australia
- ▶ Supporting Australian Economy
- ▶ Profits remain in Australia
- ▶ Ensuring skills are retained for future generations



**LIFT CAR INTERIOR**

Fabricated from aluminium, the frame of the lift car is lined with a series of white laminate panels with shadow lines. The ceiling panel is fixed into place with a shadow line and chrome fixings.

Standard car features include:

- ✓ Stainless steel handrail
- ✓ Non-slip grey indoor outdoor carpet
- ✓ Automatic dialling telephone
- ✓ 4 recessed LED down lights
- ✓ Light rays across the door entrance
- ✓ Dual controls

Laminate panels available in a wide range of colours as an optional extra.

**LANDING DOORS**

Fitted with swing action doors with a mechanical lock & electrical interlocks, the whole assembly is part of the lift shaft.

Door styles include:

- ✓ Redicote flush door with optional glass view panel
- ✓ Corinthian - Impression
- ✓ Metal door with optional glass view panel
- ✓ Glass door

To assist in the operation of the doors, automatic door operators or swipe card security devices can be fitted to the landing doors as optional extras.

Door size for **standard** lift car: 970mm wide x 2040mm high  
Lift can be supplied with 2340mm high doors.

**STATIONS**

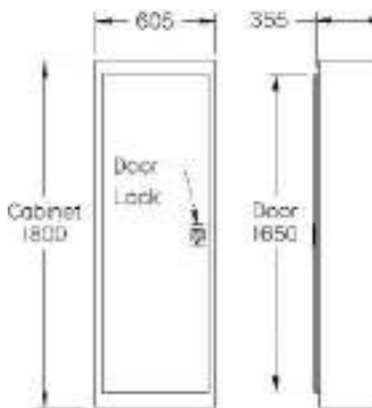
Mounted to the front of the lift & onto a stainless steel plate, the round stainless steel buttons are automatic in operation & supplied with braille & tactile.

Under the BCA Ruling, any Pioneer supplied with an intermediate landing will be provided with visual & audible indicators within the lift car and at the landings.

For securing the lift against unwanted users, each control is fitted with an isolating key switch. Used in conjunction with the parking facility, the lift car will position itself just above the lower landing, preventing either of the landing doors from opening. This command can be overridden at either landings by keying the lift back on. Weatherproof stations are available for external landing stations.

**MACHINE CABINET**

The Pioneer uses a separate lift machine cabinet that creates a more compact lift shaft design and eliminates costly machine room construction.



Fabricated from metal & powdercoated, to withstand the external elements, the cabinet is mounted at the ground level for easy access for emergency & maintenance purposes.

Provided with a key lockable door, the cabinet contains the hydraulic power unit, oil tank, hydraulic control valves, electrical control board, emergency power supply, cabinet light, emergency tools & instructions.

**INSTALLATION**

Supplied assembled & pretested, the design of the Pioneer allows for easy installation by either craning in, dismantling or manoeuvring into place.

Able to be installed within 3 - 4 days, the Pioneer is perfect for new or existing buildings as time on site is minimal.

**ELECTRICAL REQUIREMENTS**

The Pioneer only requires a 20amp RCD protected single phase power circuit. The lift mains do not require fire rating so the lift can be fed from a local sub board.

**MAINTENANCE**

For optimum performance, reliability & long term use, the lift should be serviced every 12 months by an approved lift technician.

**WARRANTY**

For all warranty enquiries, please check with your local Aussie Lifts dealer.

**LIFT TOWER**

Built as a free-standing, self-supporting unit & weighing approx 500kg, the lift tower is fabricated from aluminium & comes complete with doors, door jambs, flashings, electrical wiring & hydraulic cylinders.

To eliminate the need for a secondary door on the lift car, the section of shaft between the two landings is fitted internally with panelling to create a flush running surface.

Depending on space & architectural needs, the lift shaft can be set up for cladding to be applied directly to it's framework. The Pioneer lift tower can be easily incorporated into a new or existing building, whether it be positioned internally or externally.

**LIFT CAR**

Available in two styles of configuration:

- ▶ Single entry "**A Model**" with entry & exiting on the same side
- ▶ Dual entry "**B Model**" with entry at the front & exiting via the rear.

Car sizes are as follows:

- ▶ Single entry "**A Model**" 1100 x 1400 x 2100
- ▶ Dual entry "**B Model**" 1100 x 1400 x 2100

**OIL HYDRAULICS**

Using an oil hydraulic cylinder on both sides of the lift, the Pioneer offers a ride that is quiet, odourless & smooth.

Fine tuned, the Pioneer is low in maintenance meaning ongoing maintenance costs are kept minimal.

A tried and tested means of hoisting, the direct acting oil hydraulic cylinders do require either additional space above the lift or a trench for lowering the cylinders below the standard 100mm pit.

A variable measurement, the length of the hydraulic cylinders is reflective of the height that the lift car needs to travel (FFL to FFL). For further details, please contact one of our trained lift consultants.

**Optional Feature** - For improved floor levelling accuracy & smoother lift operation, the addition of a VVF drive to the hydraulic pump motor gives the lift the performance commonly found only on high end commercial lift control systems.

