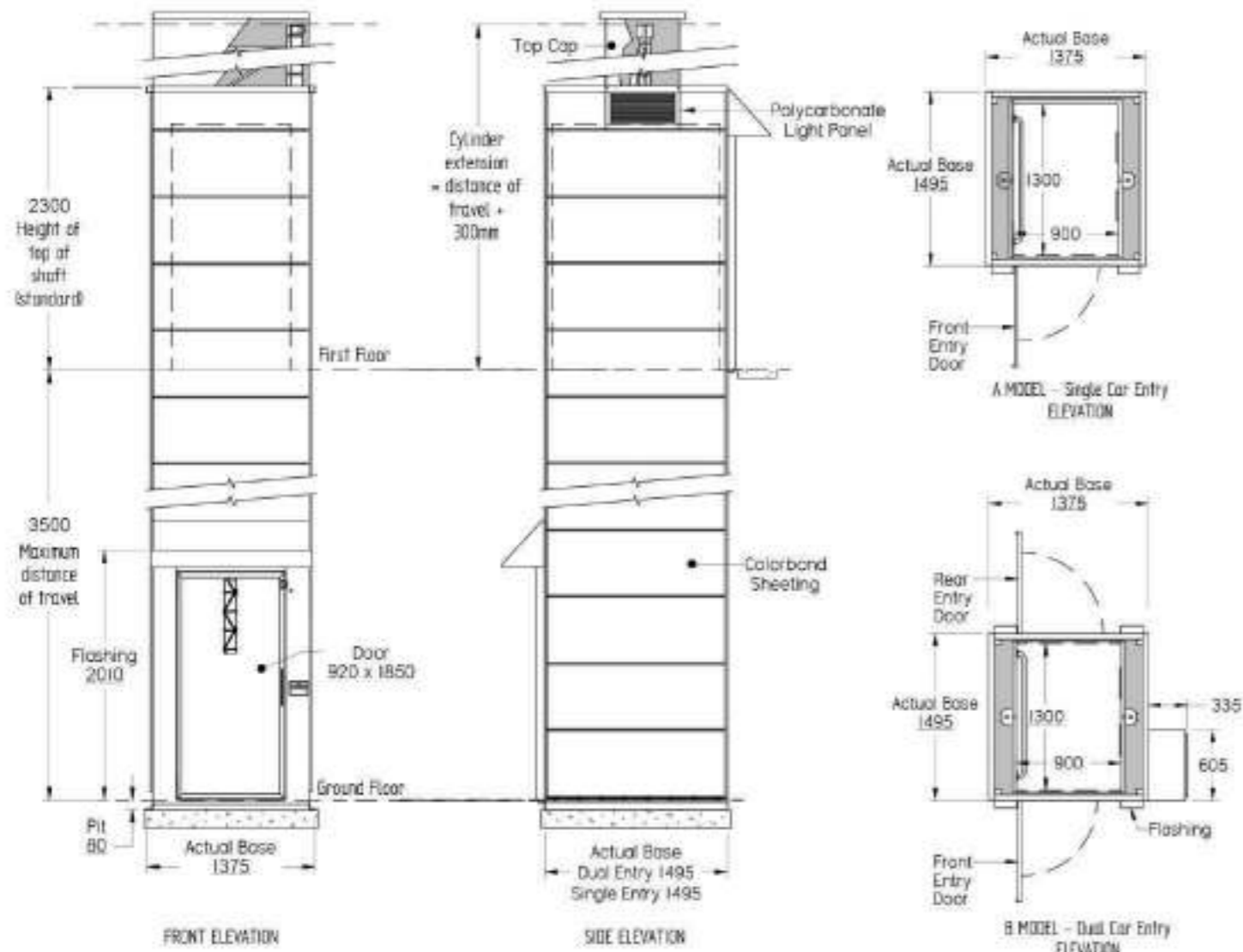


# THE GEMINI



**NOT FOR CONSTRUCTION**



RESIDENTIAL




DISABLED USE

# THE GEMINI

Water Hydraulic Residential Lift

## MAIN SPECIFICATIONS

- Carrying Capacity:** 250kg
- Car Size:** 900W x 1300D x 2020Hmm
- Door Size:** 920W x 1850Hmm
- Maximum Travel:** 3500mm
- Lift Speed:** Up to 0.083m/sec with a 90kg load
- Max No. of Stops:** 2 Stops
- Drive System:** Water hydraulic with direct acting cylinders on each side of the lift car
- Minimum Pit Depth:** 80mm
- Cylinder Extension:** Distance of travel plus 300mm
- Machine Cabinet:** 605W x 335D x 1800Hmm
- Controls:** Automatic operation & key isolation
- Standards:** Meets or exceeds requirements of the Australian Standards Lift code AS1735 Part 17
- Usage:** Residential
- Application:** External use only.
- Installation:** Crane in, dismantle or manoeuvred.
- Cladding:** Inclusive colorbond panelling
- Supply Voltage:** 240volt. 20amp RCD breaker

 **1800 AUS LIFT**  
1800 287 5438

### Call Us - We're Here to Help

We have an unrivalled reputation for after-sales care and customer service. Call us and one of our friendly lift specialists will gladly answer all your questions.

Aussie Lifts Pty Ltd  
12 Achievement Crescent  
Acacia Ridge QLD 4110  
Tel (07) 3274 4211  
[info@aussielifts.com.au](mailto:info@aussielifts.com.au)  
[www.aussielifts.com.au](http://www.aussielifts.com.au)  
A.B.N # 90 618 522 277

**AUSSIE LIFTS**

**AUSSIE LIFTS**





**“The Gemini is the most cost effective, fully automatic residential lift solution in Australia for external applications. Specifically designed for everyday Australians with mobility issues, the Gemini is custom built to an individual’s need and is available in a number of colours”**

Whether you are looking for a solution to remain in your two storey home due to limited mobility or a disability, the Gemini is perfect for installation against patios or verandahs.

Complete with it’s own self supporting enclosed lift tower, the Gemini is supplied as a finished product. Unique in design, the structure of the lift tower offers huge savings in associated building works as no load bearing walls or cladding is required. In fact, the way in which the lift is manufactured means further savings are made due to short lead times and even shorter installation times.

Custom built in Australia, the Gemini can be altered in size and layout to suit each clients independent needs. Accompanied with a number of different devices, the lift can be set up to have an automatic dialling telephone, visual and audible indicators, remote controls and automatic door operators.

Reliable in performance and simple in operation, the Gemini has the capacity to lift 250kg, to a maximum height of 3.5m at a speed of 0.083m/sec\*.

(\*Speed has been measured in an upward motion under a 90kg load)

**STANDARD SAFETY FEATURES**

Supplied with an impressive list of standard safety features, the Gemini offers peace of mind with it’s in-car emergency telephone, infra-red door sensors, emergency battery backup lowering system and lighting. On top of that, the machine cabinet has a very easy to use manual lowering valve, should the lift car ever need to be lowered.

**WATER HYDRAULICS**

Driven by two direct acting hydraulic cylinders on either side of the lift car, the Gemini uses an enclosed water system to pump the water from it’s own reservoir tank and into the hydraulic cylinders. Proven to provide a smooth and trouble free operation, the lift is also environmentally friendly and odourless.

**Cost Effective**

- ▶ Australia’s most cost effective lift solution
- ▶ Enclosed lift shaft
- ▶ Complete free-standing unit - no load bearing walls required
- ▶ Low installation/home construction costs
- ▶ Low running costs/power consumption
- ▶ Single phase 240v power
- ▶ Once a year maintenance

**Safety**

- ▶ Automatic emergency battery backup lowering system
- ▶ Additional manual lowering facilities
- ▶ Battery backup in-lift lighting system
- ▶ Internal phone
- ▶ Emergency stop function
- ▶ Infra-red safety sensors
- ▶ Key lockable push button controls
- ▶ Hydraulic low pressure detection switch
- ▶ Automatic homing of the lift car
- ▶ Non return breather

**Peace of Mind**

- ▶ Manufactured by a family owned and operated company
- ▶ Australian made to Australian Standards
- ▶ Built to superior specifications using quality materials
- ▶ Warranty on parts and labour
- ▶ Lift delivered, installed & tested by qualified lift technicians
- ▶ Custom built to your specifications
- ▶ Unrivalled after-sales service
- ▶ Environmentally friendly

**LIFT TOWER**

Unique in design and weighing approximately 350kg, the self supporting lift tower is fabricated from aluminium and is fitted with a series of folded colorbond panels to create a smooth flush surface inside the lift shaft.

Standard selection has the colorbond panelling in white and at a height of 525mm. To help unify the lift with the house, other options are available with colour selection and panel sizing.

To allow natural lighting to enter the lift shaft, a polycarbonate translucent panel is fitted to one side of the shaft and view panels to the landing doors.

When required, weatherproof awnings are fitted above the landing doors. This protects the door closer from the elements.

To complete the tower, a colorbond cap is fitted to the top which covers the cylinder extension, as well as providing weatherproofing and ventilation.



**Why buy Australian Made?**

- ▶ Built to Australian Standards
- ▶ Confidence in Quality
- ▶ Short lead times
- ▶ Parts readily available
- ▶ Jobs created in Australia
- ▶ Supporting Australian Economy
- ▶ Profits remain in Australia
- ▶ Ensuring skills are retained for future generations



**LIFT CAR**

Available in two styles of configuration:

- ▶ Single entry **“A Model”** with entry and exiting on the same side.
- ▶ Dual entry **“B Model”** with entry at the front and exiting via the rear.

Lift cars can be individually built to the customer’s requirements - up to a maximum floor space of 1.3m<sup>2</sup> or supplied in the standard size of 900mm wide x 1300mm deep x 2020mm high.

**LIFT CAR INTERIOR**

Fabricated from aluminium, the frame of the lift car is lined in white colorbond. Due to the unique way the inside of the lift shaft is flush, the lift car is void of a ceiling panel.

Standard car features include:

- ✓ Internal controls for each levels, and emergency stop
- ✓ Stainless steel handrail
- ✓ Non-slip grey indoor outdoor carpet
- ✓ Emergency telephone recessed into a control box
- ✓ 2 x recessed down lights
- ✓ 2 x photo electric sensors across the door entrance
- ✓ Alarm

**LANDING DOORS**

Fabricated from composite panel, encased in a 50mm aluminium frame, the swing action doors are light weight and durable. As standard inclusions, mechanical door locks, electric interlocks, mesh view panels & metal door handles are fitted to each landing door.

Automatic door operators & sensory operation are available as an optional extra.

Door size for **standard** lift car is: 920mm wide x 1850mm high.

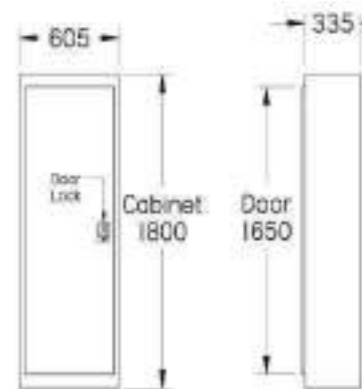
**STATIONS**

Mounted to the front of the lift shaft and onto a stainless steel plate, the round stainless steel buttons are automatic in operation.

For securing the lift against unwanted users, each control is fitted with an isolating key switch. Used in conjunction with the parking facility, the lift car will position itself just above the lower landing, preventing either of the landings doors from being opened. This command can be overridden at either landing by keying the lift back on.

**MACHINE CABINET**

The Gemini is supplied with its own external grade machine cabinet which eliminates the need to construct costly machine rooms. The cabinet is mounted to the side of the lift, at ground level, and provides easy access for emergency lift function and maintenance.



Fabricated from steel and powder coated to withstand the external elements, the cabinet is fitted with a key lock to deter against unauthorised access.

Provided with a key lockable door, the cabinet contains the hydraulic power unit, recyclable water tank, hydraulic control valves, electrical control board, emergency power supply, cabinet lighting, emergency tools and instructions.

**INSTALLATION**

Supplied assembled & pretested, the design of the Gemini allows for easy installation by either craning in, dismantling or manoeuvring into place.

**ELECTRICAL REQUIREMENTS**

The standard models all have the same economical power requirements.

- ▶ 240volt. Single Phase. 20amp RCD protected
- ▶ Active analogue telephone line

**MAINTENANCE**

For optimum performance, reliability and long term use, the lift should be serviced every twelve months by an approved lift technician.

**WARRANTY**

For all warranty enquiries, please check with your local Aussie Lifts dealer.

